



ICONIX INFINITE

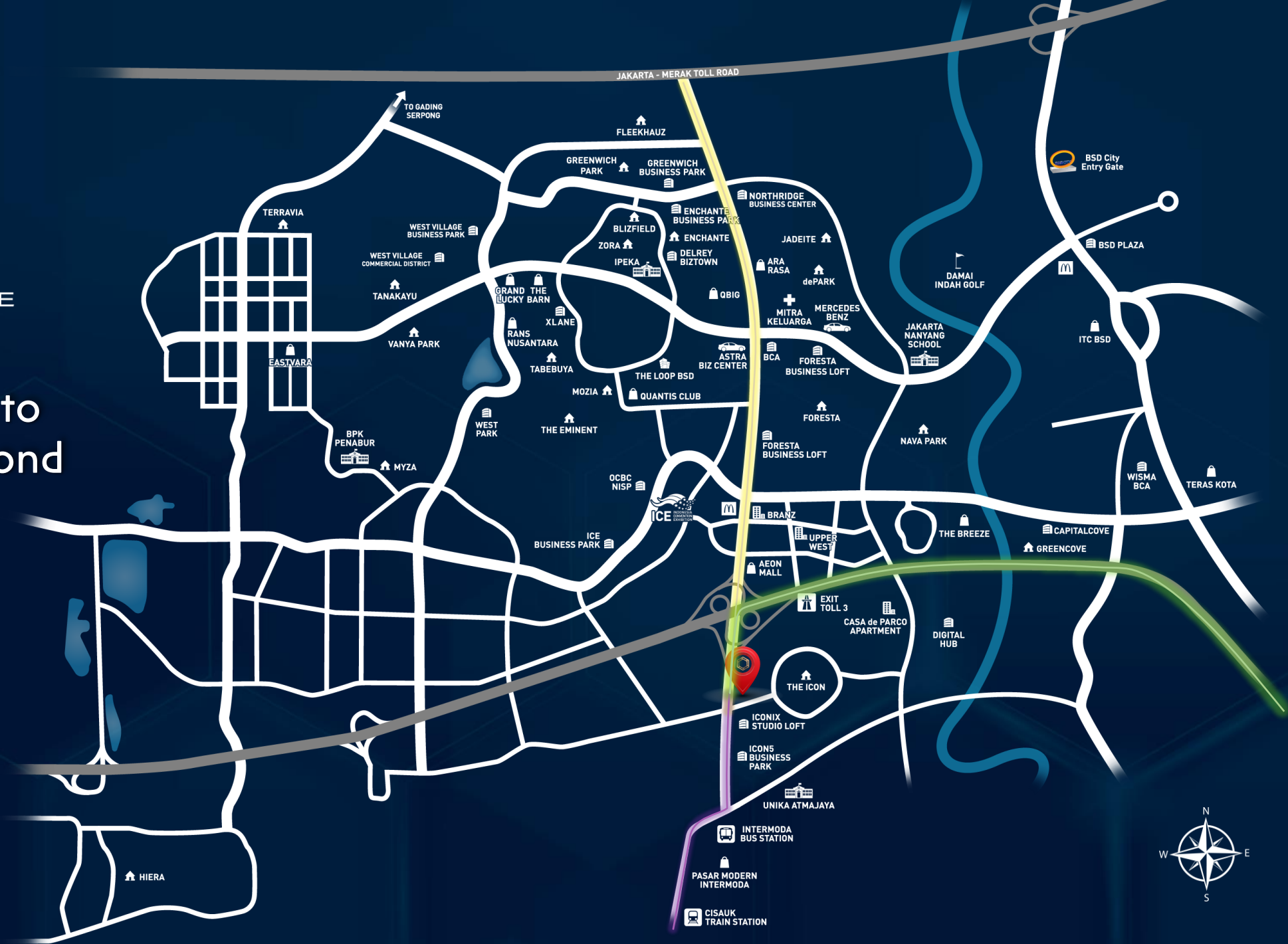
PREMIUM STUDIO LOFT



ICONIX INFINITE

PREMIUM STUDIO LOFT

Your Gateway to
Jakarta and Beyond



Connecting Your Business to Everywhere



150m
from

East BSD 2 Toll Gate Exit



350m
from

Pasar Modern @ Intermoda



350m
from

BSD Terminal Intermoda



500m
from

Cisauk Train Station



750m
from

AEON Mall



Cluster
Freja

Cluster
Simplicity



Cluster
Simplicity

Just a step away from Toll Gate

The One and Only
Premium Studio Loft
Offering Direct Toll Access

Across Upcoming F&B and Wellness Hub





ACORNIA
COFFEE

COFFEE LICIO

NEO

CORNBREO

Finify

La Clinique

AGF
Finance

Financiere
Member of AGF

FLASER BISS

POP-UP Mart

FOREY ONE NORTH

AVALANCHE

FIDEL

CECILIADORA CO.

HURLEX

Diamonds

GELAMORE

TegMader

ICONIX INFINITE



Sophisticated European Luxury Architecture



Limited Units



All Units Facing Boulevard



ROW 40 Boulevard





ICONIX INFINITE



ICONIX INFINITE

Convenient Drop-Off



Double Layer Parking Area



Calderone
Eatery

Insuro

CUPS.CO

FAIRHAVEN
Wellness

SABINE
RESTAURANT

NEO

FIDEL

FITNESS Center

BLAZE

High Visibility Signage Spot



Begin your Journey
Make this Infinity Opportunity to Reality

The Luxury of your Inspiration
Your Own Business to Reality

Business Ideas



Ground Floor – Korean Supermarket



1st Floor - Restaurant



2nd Floor - Restaurant





3rd Floor - Office

1. Lift
2. Column Free
3. Multiple Signage Spot
4. Connecting Hallway Corridor
5. 3 Canopy Covered Drop Off Lobby
6. Double Layer Parking Area
7. Backyard



Siteplan

Residentials



OUT

IN

DROP OFF

IN

ROW 40



TYPE A1 - 6X18



TYPE B1 - 6X18



TYPE A2 - 6X18



TYPE B2 - 6X18



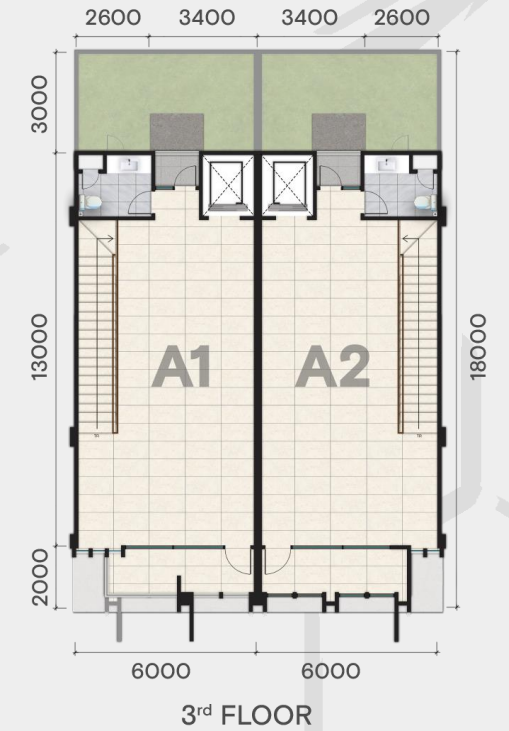
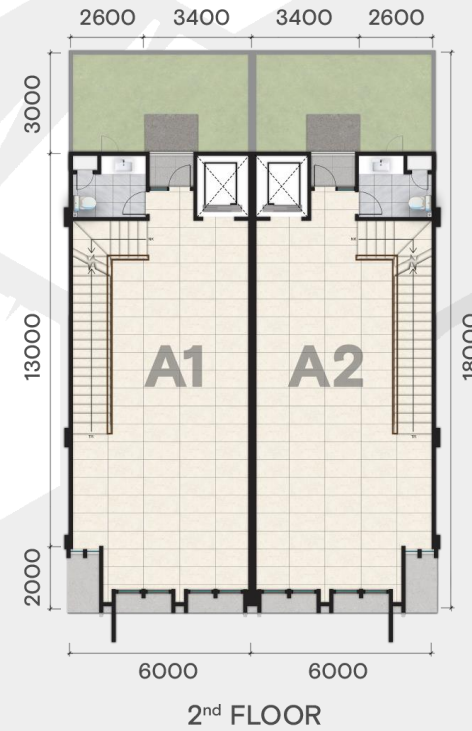
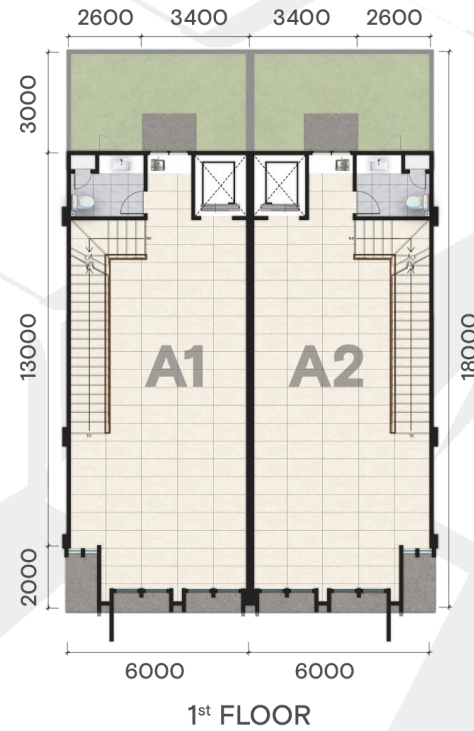
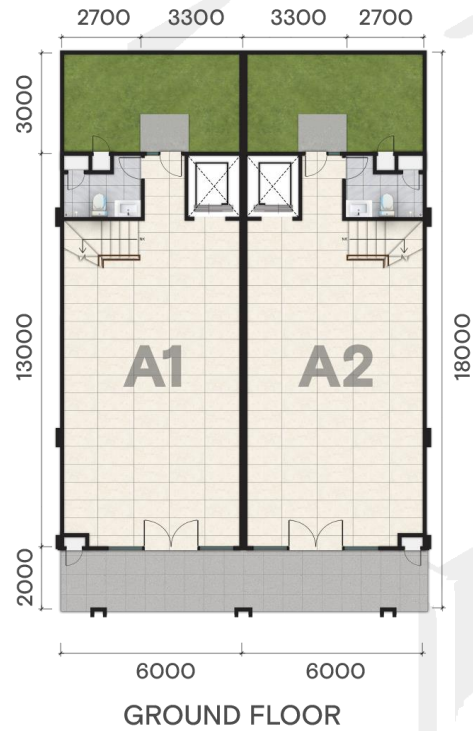
Blockplan

BLOCK A

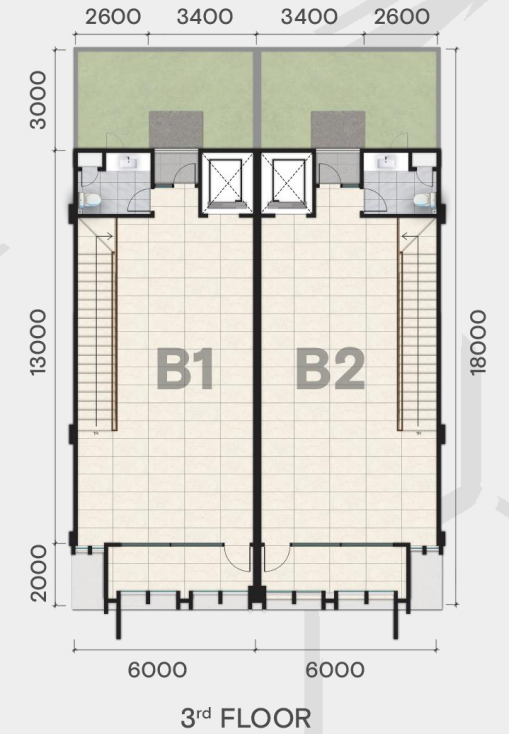
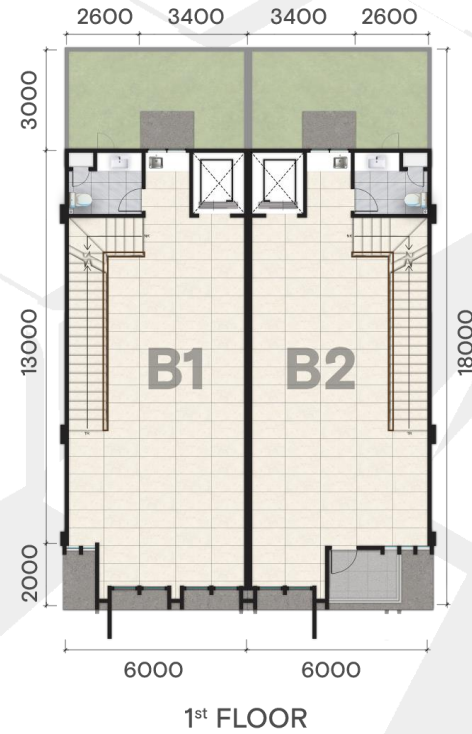
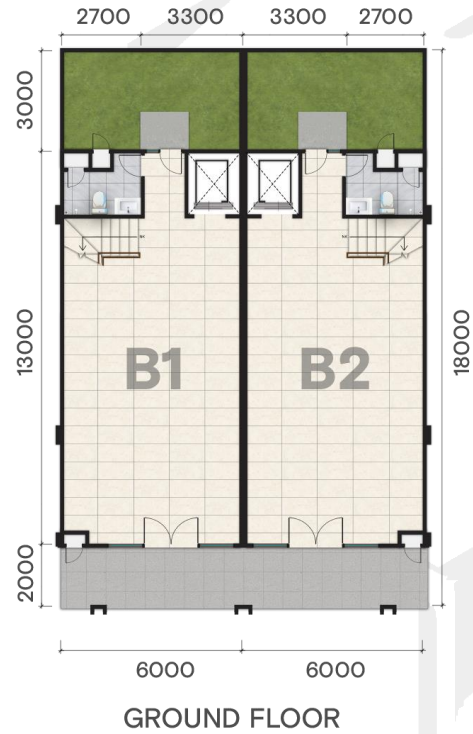


Floorplan

TYPE A - 6x18



TYPE B - 6x18



Building Outline Specifications*

FOUNDATION

Mini Pile

MAIN STRUCTURE

Reinforced Concrete

WALL

Brick / Aerated Autoclaved Concrete (AAC) with plaster and paint

CEILING

Gypsum Board

ROOF

Zincalume / Metal Roof with insulation

DOOR & WINDOW

Main Door

Tempered Glass

Window

Aluminium frame with Glass

FACADE

Terracotta Looks Finished Facade, Aluminium Frame with Glass, Homogeneous Tile and Texture Paint

FLOOR

Terrace

Non-Slip Homogeneous Tile

Indoor Area

Homogeneous Tile

Toilet

Non-Slip Homogeneous Tile

SANITARY

American Standard/ Equivalent

ELECTRICITY

13.200 VA

ELEVATOR

Capacity 6 person

INTERNET NETWORK

Fiber Optic

WATER SUPPLY

PAM

TELEPHONE

1 Line

*Specification and material can change without any further notice

DISCLAIMER: The information contained herein is subject and cannot form part of an offer or contract. While every reasonable care has been taken in providing this information, the owner or its agent cannot be held responsible for any inaccuracies. Whilst we believe the contents of this book to be correct and accurate at time of print, they are not to be regarded as statements or representations of fact. Illustrations in the book are artist's impressions which serve only to give an approximate idea of the project. All artist's impressions are subject to any amendments as may be approved by the relevant authorities.

Key Highlights



- Strategic Location
- Next to Exit Toll Serpong - Balaraja
- Main Boulevard ROW 40
- All Units Facing Main Boulevard
- Modern Luxury Design
- Double Layer Parking Area
- Lay bay & Drop Off Points
- Column Free
- 3 Spot Signage Support
- Balcony Area
- Backyard
- Private Lift Area
- Limited Units



DISCLAIMER: The information contained herein is subject and cannot form part of an offer or contract. While every reasonable care has been taken in providing this information, the owner or its agent cannot be held responsible for any inaccuracies. Whilst we believe the contents of this book to be correct and accurate at time of print, they are not to be regarded as statements or representations of fact. Illustrations in the book are artist's impressions which serve only to give an approximate idea of the project. All artist's impressions are subject to any amendments as may be approved by the relevant authorities.